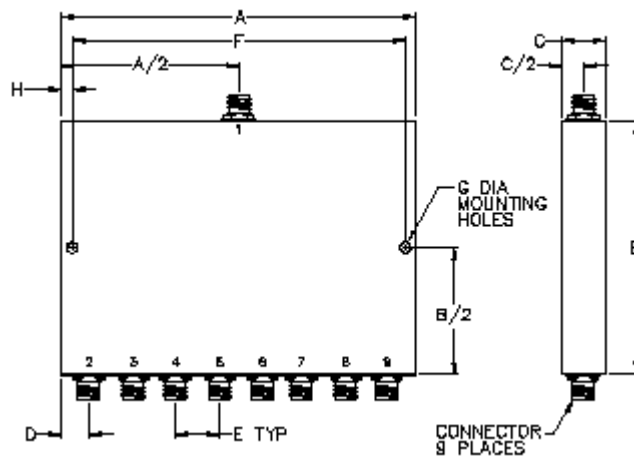


8 Ways power divider 2GHz-4GHz, 30W, SMAf

Caractéristiques électriques <i>Electrical specifications</i>	Conditions de mesures <i>Measurement conditions</i>	Spécifications <i>Specifications</i>			Unités <i>Units</i>
		Min.	Typ.	Max.	
Frequency range	-20 / +55 °C	2		4	GHz
Insertion loss	2-4GHz		0.9	1.2	dB
Isolation	2-4GHz	18	20		dB
Amplitude balance	2-4GHz		±0.1	±0.3	dB
Phase balance	2-4GHz		±2	±6	°
VSWR	2-4GHz Input		1.45 :1	1.5 :1	-
VSWR	2-4GHz Output		1.30 :1	1.35 :1	-
Power rating *	2-4GHz Input		10	30	W
Caractéristiques mécaniques <i>Mechanical features</i>	Conditions de mesures <i>Measurement conditions</i>	Spécifications <i>Specifications</i>			
Longueur x largeur x Hauteur <i>Length x width x height</i>	L x W x H ±0.1 mm	104.1 x 54.6 x 10.2 Outline PD8-2			mm
Matière / finition <i>Material / finish</i>	RoHs compliant	Aluminium / Suretec			-
Connectique <i>Connectors</i>	-	9 x SMA f			-
Conditions environnementales <i>Environmental conditions</i>	Conditions de mesures <i>Measurement conditions</i>	Spécifications / Specifications			Unités <i>Units</i>
		Min.	Typ.	Max.	
Température de service <i>Operating temperature</i>		-20		+55	°C
Température de stockage <i>Storage temperature</i>		-45		+85	°C

- For load VSWR better than 1.20:1.

Ind.	Par	Le	Observation
0	Allamando	08/10/08	Création



OUTLINE	CONN.	A		B		C		D		E		F		G		H	
		Inch.	mm.	Inch.	mm.	Inch.	mm.	Inch.	mm.	Inch.	mm.	Inch.	mm.	Inch.	mm.	Inch.	mm.
PD8-1	SMA	4.50	114.3	3.0	76.2	.40	10.2	.50	12.7	.50	12.7	4.00	101.6	.125	3.2	.250	6.4
PD8-2	SMA	4.10	104.1	0	54.6	.40	10.2	.30	7.6	.50	12.7	3.75	95.6	.125	3.2	.175	4.4
PD8-3	SMA	4.00	101.6	2.2	94	.40	10.2	.25	6.4	.50	12.7	3.50	88.9	.125	3.2	.250	6.4
PD8-4	SMA	4.00	101.6	3.7	50.8	.40	10.2	.25	6.4	.50	12.7	3.75	95.3	.150	3.8	.175	4.4
PD8-5	SMA	5.00	127	2	190.	.40	10.2	.25	6.4	.50	12.7	4.70	119.4	.150	3.8	.150	3.8
PD8-6	SMA	4.00	101.6	7.5	5	.50	12.7	.25	6.4	.50	12.7	3.75	95.3	.150	3.8	.125	3.2
PD8-7	SMA	4.75	120.7	2.3	57.2	.52	13.2	.25	6.4	.60	15.2	4.45	113	.125	3.2	.150	3.8

Ind.	Par	Le	Observation
0	Allamando	08/10/08	Création