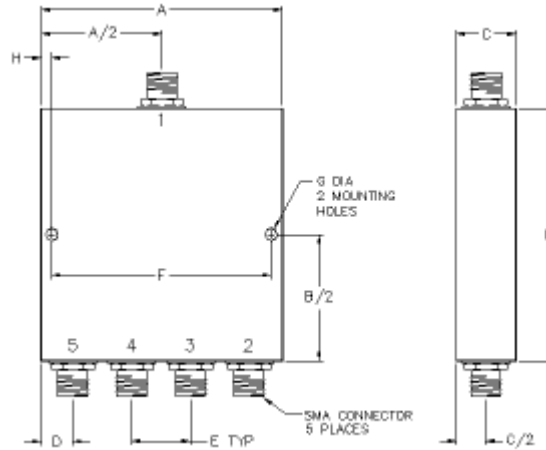
	<i>Réf.: PD4-0.88-0.96-100</i> Spécifications techniques Technical specifications	Page : 1/2
		Ind.: 0
		Date : 19-05-2010

4 Ways power divider 880MHz-960MHz, 100W, SMAf

Caractéristiques électriques <i>Electrical specifications</i>	Conditions de mesures <i>Measurement conditions</i>	Spécifications <i>Specifications</i>			
		Min.	Typ.	Max.	Unités <i>Units</i>
Frequency range	-20 / +55 °C	880		960	MHz
Insertion loss	880-960MHz		0.4	0.7	dB
Isolation	880-960MHz	20	22		dB
Amplitude balance	880-960MHz		±0.1	±0.4	dB
Phase balance	880-960MHz		±1	±10	°
VSWR	880-960MHz		1.40 :1	1.4 :1	-
VSWR	880-960MHz Output		1.30 :1	1.30 :1	-
Power rating *	880-960MHz Input		10	100	W
Caractéristiques mécaniques <i>Mechanical features</i>	Conditions de mesures <i>Measurement conditions</i>	Spécifications <i>Specifications</i>			
Longueur x largeur x Hauteur <i>Length x width x height</i>	L x W x H ±0.1 mm	91.4x 86.4x 13 Outline number PD4-2			mm
Matière / finition <i>Material / finish</i>	RoHs compliant	Aluminium / Suretec			-
Connectique <i>Connectors</i>	-	5 x SMA f			-
Conditions environnementales <i>Environmental conditions</i>	Conditions de mesures <i>Measurement conditions</i>	Spécifications / <i>Specifications</i>			Unités <i>Units</i>
		Min.	Typ.	Max.	
Température de service <i>Operating temperature</i>		-20		+55	°C
Température de stockage <i>Storage temperature</i>		-45		+85	°C

- For load VSWR better than 1.20:1.

Ind.	Par	Le	Observation
0	Allamando	04/05/2007	Création
1	Covasso	19/05/2010	Electrical & mechanical features



OUTLINE	CONN.	A		B		C		D		E		F		G		H	
		Inch.	mm.	Inch.	mm.	Inch.	mm.	Inch.	mm.	Inch.	mm.	Inch.	mm.	Inch.	mm.	Inch.	mm.
PD4-1	SMA	3.10	78.7	3.70	94	.51	13	.50	12.7	.70	17.8	2.85	72.4	.125	3.2	.125	3.20
PD4-2	SMA	3.60	91.4	3.40	86.4	.51	13	.75	19.1	.67	17	3.35	85.1	.125	3.2	.125	3.20
PD4-4	SMA	2.80	71.1	2.00	50.8	.51	13	.40	10.2	.67	17	2.55	64.8	.125	3.2	.125	3.20
PD4-5	SMA	2.30	58.4	1.54	39.1	.40	10.2	.40	10.2	.50	12.7	2.06	52.3	.110	2.8	.120	3.05
PD4-6	SMA	2.63	66.8	2.90	73.7	.51	13	.55	14	.51	13	2.38	60.5	.125	3.2	.125	3.20
PD4-7	SMA	2.23	56.6	2.15	54.6	.51	13	.35	8.9	.51	13	1.98	50.3	.125	3.2	.125	3.20
PD4-8	SMA	1.98	50.3	1.46	37.8	.40	10.2	.24	6.1	.50	12.7	1.73	43.9	.125	3.2	.125	3.20
PD4-9	SMA	2.60	66.0	5.45	138.4	.50	12.7	.55	14	.50	12.7	2.30	58.4	.150	3.8	.150	3.80
PD4-10	SMA	2.95	74.9	6.25	158.8	.50	12.7	.25	6.4	.50	12.7	2.70	68.6	.150	3.8	.125	3.20
PD4-11	SMA	4.00	101.6	5.30	134.6	.40	10.2	.50	12.7	1.00	25.4	3.70	94.0	.150	3.8	.150	3.80



Ind.	Par	Le	Observation
0	Allamando	04/05/2007	Création
1	Covasso	19/05/2010	Electrical & mechanical features