


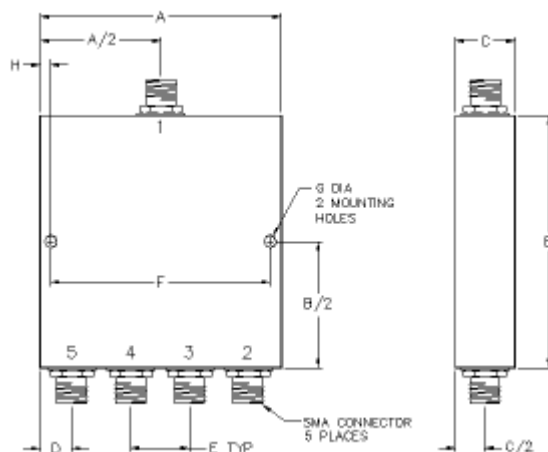
| | | |
|---|---|-------------------|
|  | Réf.: PD4-0.5-1-30 | Page : 1/2 |
| | Spécifications techniques Technical specifications | Ind.: 0 |
| | | Date : 19-05-2010 |

4 Ways power divider 500MHz-1GHz, 30W, SMAf

| Caractéristiques électriques <i>Electrical specifications</i> | Conditions de mesures <i>Measurement conditions</i> | Spécifications <i>Specifications</i> | | | |
|--|--|---|---------|---------|------------------------|
| | | Min. | Typ. | Max. | Unités <i>Units</i> |
| Frequency range | -20 / +55 °C | 500 | | 1000 | MHz |
| Insertion loss | 500-1000MHz | | 0.4 | 0.9 | dB |
| Isolation | 500-1000MHz | 22 | 22 | | dB |
| Amplitude balance | 500-1000MHz | | ±0.1 | ±0.3 | dB |
| Phase balance | 500-1000MHz | | ±1 | ±5 | ° |
| VSWR | 500-1000MHz Input | | 1.45 :1 | 1.45 :1 | - |
| VSWR | 500-1000MHz Output | | 1.30 :1 | 1.30 :1 | - |
| Power rating * | 500-1000MHz Input | | 10 | 30 | W |
| | | | | | |
| | | | | | |
| Caractéristiques mécaniques <i>Mechanical features</i> | Conditions de mesures <i>Measurement conditions</i> | Spécifications <i>Specifications</i> | | | |
| Longueur x largeur x Hauteur <i>Length x width x height</i> | L x W x H ±0.1 mm | 91.4x 86.4x 13 Outline number PD4-2 | | | mm |
| Matière / finition <i>Material / finish</i> | RoHs compliant | Aluminium / Suretec | | | - |
| Connectique <i>Connectors</i> | - | 5 x SMA f | | | - |
| | | | | | |
| Conditions environnementales <i>Environmental conditions</i> | Conditions de mesures <i>Measurement conditions</i> | Spécifications / Specifications | | | Unités <i>Units</i> |
| | | Min. | Typ. | Max. | |
| Température de service <i>Operating temperature</i> | | -20 | | +55 | °C |
| Température de stockage <i>Storage temperature</i> | | -45 | | +85 | °C |

- For load VSWR better than 1.20:1.

| Ind. | Par | Le | Observation |
|------|-----------|------------|----------------------------------|
| 0 | Allamando | 04/05/2007 | Création |
| 1 | Covasso | 19/05/2010 | Electrical & mechanical features |
| | | | |
| | | | |



| OUTLINE | CONN. | A | | B | | C | | D | | E | | F | | G | | H | |
|---------|-------|-------|-------|-------|-------|-------|------|-------|------|-------|------|-------|------|-------|-----|-------|------|
| | | Inch. | mm. | Inch. | mm. | Inch. | mm. | Inch. | mm. | Inch. | mm. | Inch. | mm. | Inch. | mm. | Inch. | mm. |
| PD4-1 | SMA | 3.10 | 78.7 | 3.70 | 94 | .51 | 13 | .50 | 12.7 | .70 | 17.8 | 2.85 | 72.4 | .125 | 3.2 | .125 | 3.20 |
| PD4-2 | SMA | 3.60 | 91.4 | 3.40 | 86.4 | .51 | 13 | .75 | 19.1 | .67 | 17 | 3.35 | 85.1 | .125 | 3.2 | .125 | 3.20 |
| PD4-4 | SMA | 2.80 | 71.1 | 2.00 | 50.8 | .51 | 13 | .40 | 10.2 | .67 | 17 | 2.55 | 64.8 | .125 | 3.2 | .125 | 3.20 |
| PD4-5 | SMA | 2.30 | 58.4 | 1.54 | 39.1 | .40 | 10.2 | .40 | 10.2 | .50 | 12.7 | 2.06 | 52.3 | .110 | 2.8 | .120 | 3.05 |
| PD4-6 | SMA | 2.63 | 66.8 | 2.90 | 73.7 | .51 | 13 | .55 | 14 | .51 | 13 | 2.38 | 60.5 | .125 | 3.2 | .125 | 3.20 |
| PD4-7 | SMA | 2.23 | 56.6 | 2.15 | 54.6 | .51 | 13 | .35 | 8.9 | .51 | 13 | 1.98 | 50.3 | .125 | 3.2 | .125 | 3.20 |
| PD4-8 | SMA | 1.98 | 50.3 | 1.46 | 37.8 | .40 | 10.2 | .24 | 6.1 | .50 | 12.7 | 1.73 | 43.9 | .125 | 3.2 | .125 | 3.20 |
| PD4-9 | SMA | 2.60 | 66.0 | 5.45 | 138.4 | .50 | 12.7 | .55 | 14 | .50 | 12.7 | 2.30 | 58.4 | .150 | 3.8 | .150 | 3.80 |
| PD4-10 | SMA | 2.95 | 74.9 | 6.25 | 158.8 | .50 | 12.7 | .25 | 6.4 | .50 | 12.7 | 2.70 | 68.6 | .150 | 3.8 | .125 | 3.20 |
| PD4-11 | SMA | 4.00 | 101.6 | 5.30 | 134.6 | .40 | 10.2 | .50 | 12.7 | 1.00 | 25.4 | 3.70 | 94.0 | .150 | 3.8 | .150 | 3.80 |



| Ind. | Par | Le | Observation |
|------|-----------|------------|----------------------------------|
| 0 | Allamando | 04/05/2007 | Création |
| 1 | Covasso | 19/05/2010 | Electrical & mechanical features |
| | | | |
| | | | |