

30/06/2010

LOW COST MECHANICAL SWITCHES (Public prices)

PART NUMBER	FREQUENCY RANGE (MHz)	absorptive	reflective	ISOLATION Typ. (dB)	INSERTION LOSS Typ. (dB)	VSWR (:1)	POWER Max. (W)	CONNECTORS In / Out	PRICE \$ HT (1 - 9)	OUTLINE NUMBER
SP2T		<i>Standard supply 12V</i>		<i>with/without TTL driver 5V</i>						
SP2TR-30M-12V-T-S	DC - 30		X	65	0,1	1,20	10	SMA f / SMA f	79	SP2T-1
SP2TR-30M-12V-T-N	DC - 30		X	65	0,1	1,20	10	N f / N f	84	SP2T-2
SP2TA-30M-12V-T-S	DC - 30	X		65	0,2	1,25	10	SMA f / SMA f	82	SP2T-1
SP2TA-30M-12V-T-N	DC - 30	X		65	0,2	1,25	10	N f / N f	87	SP2T-2
SP2TR-1G-12V-T-S	DC - 1000		X	65	0,1	1,20	10	SMA f / SMA f	79	SP2T-1
SP2TR-1G-12V-T-N	DC - 1000		X	65	0,1	1,20	10	N f / N f	84	SP2T-2
SP2TA-1G-12V-T-S	DC - 1000	X		65	0,2	1,25	10	SMA f / SMA f	82	SP2T-1
SP2TA-1G-12V-T-N	DC - 1000	X		65	0,2	1,25	10	N f / N f	87	SP2T-2
SP2TR-3G-12V-T-S	DC - 3000		X	30	0,3	1,25	10	SMA f / SMA f	79	SP2T-1
SP2TR-3G-12V-T-N	DC - 3000		X	30	0,3	1,25	10	N f / N f	84	SP2T-2
SP2TA-3G-12V-T-S	DC - 3000	X		30	0,6	1,30	10	SMA f / SMA f	82	SP2T-1
SP2TA-3G-12V-T-N	DC - 3000	X		30	0,6	1,30	10	N f / N f	87	SP2T-2
SP3T		<i>Standard supply 12V</i>		<i>with/without TTL driver 5V</i>						
SP3TR-30M-12V-T-S	DC - 30		X	65	0,2	1,20	10	SMA f / SMA f	95	SP3T-3
SP3TR-30M-12V-T-N	DC - 30		X	65	0,2	1,20	10	N f / N f	101	SP3T-4
SP3TA-30M-12V-T-S	DC - 30	X		65	0,3	1,25	10	SMA f / SMA f	98	SP3T-1
SP3TA-30M-12V-T-N	DC - 30	X		65	0,3	1,25	10	N f / N f	104	SP3T-2
SP3TR-1G-12V-T-S	DC - 1000		X	65	0,2	1,20	10	SMA f / SMA f	95	SP3T-3
SP3TR-1G-12V-T-N	DC - 1000		X	65	0,2	1,20	10	N f / N f	101	SP3T-4
SP3TA-1G-12V-T-S	DC - 1000	X		65	0,3	1,25	10	SMA f / SMA f	98	SP3T-1
SP3TA-1G-12V-T-N	DC - 1000	X		65	0,3	1,25	10	N f / N f	104	SP3T-2
SP3TR-3G-12V-T-S	DC - 3000		X	30	0,6	1,25	10	SMA f / SMA f	95	SP3T-3
SP3TR-3G-12V-T-N	DC - 3000		X	30	0,6	1,25	10	N f / N f	101	SP3T-4
SP3TA-3G-12V-T-S	DC - 3000	X		30	0,9	1,30	10	SMA f / SMA f	98	SP3T-1
SP3TA-3G-12V-T-N	DC - 3000	X		30	0,9	1,30	10	N f / N f	104	SP3T-2



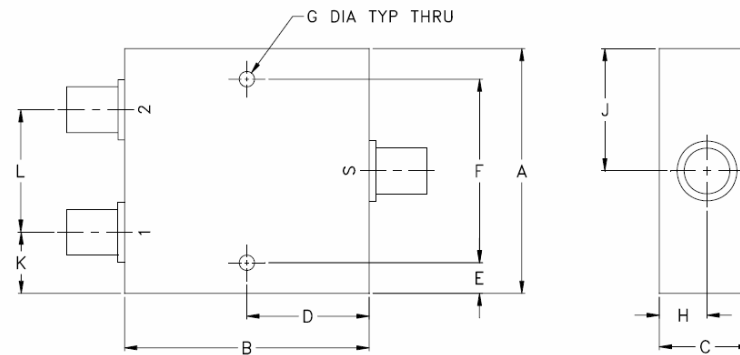
30/06/2010

LOW COST MECHANICAL SWITCHES (Public prices)

PART NUMBER	FREQUENCY RANGE (MHz)	absorptive	reflective	ISOLATION Typ. (dB)	INSERTION LOSS Typ. (dB)	VSWR (:1)	POWER Max. (W)	CONNECTORS In / Out	PRICE \$ HT (1 - 9)	OUTLINE NUMBER
SP4T		<i>Standard supply 12V</i>		<i>with/without TTL driver 5V</i>						
SP4TR-30M-12V-T-S	DC - 30		X	65	0,2	1,20	10	SMA f / SMA f	101	SP4T-3
SP4TR-30M-12V-T-N	DC - 30		X	65	0,2	1,20	10	N f / N f	107	SP4T-4
SP4TA-30M-12V-T-S	DC - 30	X		65	0,3	1,25	10	SMA f / SMA f	104	SP4T-1
SP4TA-30M-12V-T-N	DC - 30	X		65	0,3	1,25	10	N f / N f	110	SP4T-2
SP4TR-1G-12V-T-S	DC - 1000		X	65	0,2	1,20	10	SMA f / SMA f	101	SP4T-3
SP4TR-1G-12V-T-N	DC - 1000		X	65	0,2	1,20	10	N f / N f	107	SP4T-4
SP4TA-1G-12V-T-S	DC - 1000	X		65	0,3	1,25	10	SMA f / SMA f	104	SP4T-1
SP4TA-1G-12V-T-N	DC - 1000	X		65	0,3	1,25	10	N f / N f	110	SP4T-2
SP4TR-3G-12V-T-S	DC - 3000		X	30	0,6	1,25	10	SMA f / SMA f	101	SP4T-3
SP4TR-3G-12V-T-N	DC - 3000		X	30	0,6	1,25	10	N f / N f	107	SP4T-4
SP4TA-3G-12V-T-S	DC - 3000	X		30	0,9	1,30	10	SMA f / SMA f	104	SP4T-1
SP4TA-3G-12V-T-N	DC - 3000	X		30	0,9	1,30	10	N f / N f	110	SP4T-2
SP8T		<i>Standard supply 12V</i>		<i>with/without TTL driver 5V</i>						
SP8TR-30M-12V-T-S	DC - 30		X	65	0,3	1,20	10	SMA f / SMA f	158	SP8T-3
SP8TR-30M-12V-T-N	DC - 30		X	65	0,3	1,20	10	N f / N f	174	SP8T-2
SP8TA-30M-12V-T-S	DC - 30	X		65	0,4	1,25	10	SMA f / SMA f	172	SP8T-1
SP8TA-30M-12V-T-N	DC - 30	X		65	0,4	1,25	10	N f / N f	177	SP8T-2
SP8TR-1G-12V-T-S	DC - 1000		X	65	0,3	1,20	10	SMA f / SMA f	158	SP8T-3
SP8TR-1G-12V-T-N	DC - 1000		X	65	0,3	1,20	10	N f / N f	174	SP8T-2
SP8TA-1G-12V-T-S	DC - 1000	X		65	0,4	1,25	10	SMA f / SMA f	172	SP8T-1
SP8TA-1G-12V-T-N	DC - 1000	X		65	0,4	1,25	10	N f / N f	177	SP8T-2
SP8TR-3G-12V-T-S	DC - 3000		X	30	0,9	1,25	10	SMA f / SMA f	158	SP8T-3
SP8TR-3G-12V-T-N	DC - 3000		X	30	0,9	1,25	10	N f / N f	174	SP8T-2
SP8TA-3G-12V-T-S	DC - 3000	X		30	1,2	1,30	10	SMA f / SMA f	172	SP8T-1
SP8TA-3G-12V-T-N	DC - 3000	X		30	1,2	1,30	10	N f / N f	177	SP8T-2

30/06/2010

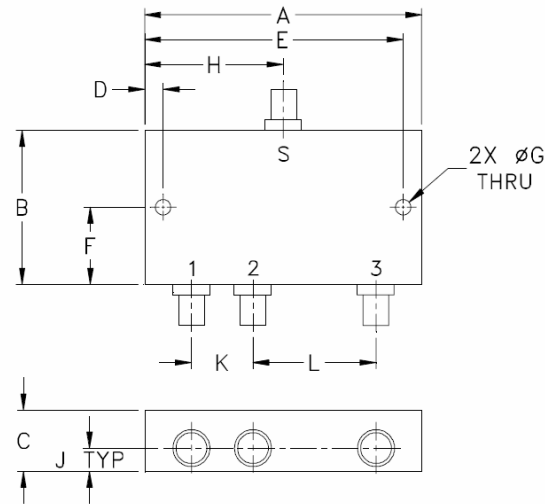
LOW COST MECHANICAL SWITCHES (Public prices)



OUTLINE	A		B		C		D		E		F		G		H		J		K		L	
	Inch.	mm.	Inch.	mm.	Inch.	mm.	Inch.	mm.	Inch.	mm.	Inch.	mm.	Inch.	mm.	Inch.	mm.	Inch.	mm.	Inch.	mm.	Inch.	mm.
SP2T-1	1,97	50,0	1,97	50,0	0,87	22,0	0,98	25,0	0,12	3,00	1,73	44,0	0,13	3,20	0,30	7,50	0,98	25,0	0,48	12,3	1,00	25,4
SP2T-2	1,97	50,0	1,97	50,0	0,94	24,0	0,98	25,0	0,12	3,00	1,73	44,0	0,13	3,20	0,30	7,50	0,98	25,0	0,48	12,3	1,00	25,4

30/06/2010

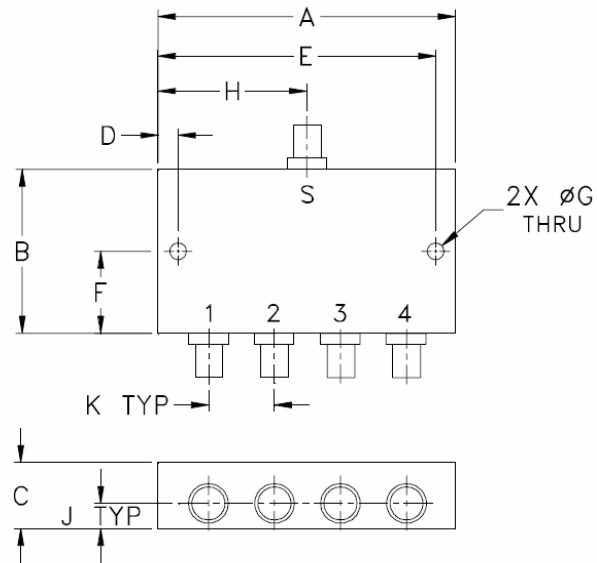
LOW COST MECHANICAL SWITCHES (Public prices)



OUTLINE	A		B		C		D		E		F		G		H		J		K		L	
	Inch.	mm.	Inch.	mm.	Inch.	mm.	Inch.	mm.	Inch.	mm.	Inch.	mm.	Inch.	mm.	Inch.	mm.	Inch.	mm.	Inch.	mm.	Inch.	mm.
SP3T-1	2,76	70,0	2,76	70,0	0,87	22,0	0,08	2,00	2,68	68,0	1,38	35,0	0,13	3,20	1,38	35,0	0,30	7,50	0,5	12,7	1,00	25,4
SP3T-2	5,91	150	3,15	80,0	0,95	24,0	0,08	2,00	5,83	148	1,57	40,0	7,80	198	2,95	75,0	0,37	9,50	1,00	25,4	2,00	50,8
SP3T-3	1,97	50,0	1,97	50,0	0,87	22,0	0,08	2,00	2,68	68,0	1,38	35,0	0,13	3,20	1,38	35,0	0,30	7,50	0,50	12,7	1,00	25,4
SP3T-4	3,94	100	1,97	50,0	0,95	24,0	0,08	2,00	5,83	148	1,57	40,0	7,80	198	2,95	75,0	0,37	9,50	1,00	25,4	2,00	50,8

30/06/2010

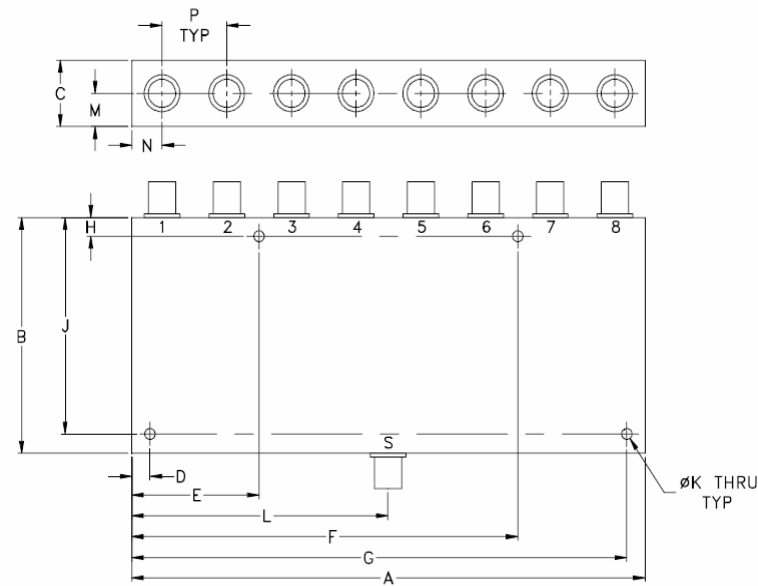
LOW COST MECHANICAL SWITCHES (Public prices)



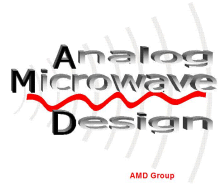
OUTLINE	A		B		C		D		E		F		G		H		J		K	
	Inch.	mm.	Inch.	mm.	Inch.	mm.	Inch.	mm.	Inch.	mm.	Inch.	mm.	Inch.	mm.	Inch.	mm.	Inch.	mm.	Inch.	mm.
SP4T-1	2,76	70,0	2,76	70,0	0,87	22,0	0,08	2,00	2,68	68,0	1,38	35,0	0,13	3,20	1,38	35,0	0,30	7,50	0,5	12,7
SP4T-2	5,91	150	3,15	80,0	0,95	24,0	0,08	2,00	5,83	148	1,57	40,0	7,80	198	2,95	75,0	0,37	9,50	1,00	25,4
SP4T-3	1,97	50,0	1,97	50,0	0,87	22,0	0,08	2,00	2,68	68,0	1,38	35,0	0,13	3,20	1,38	35,0	0,30	7,50	0,50	12,7
SP4T-4	3,94	100	1,97	50,0	0,95	24,0	0,08	2,00	5,83	148	1,57	40,0	7,80	198	2,95	75,0	0,37	9,50	1,00	25,4

30/06/2010

LOW COST MECHANICAL SWITCHES (Public prices)



OUTLINE	A		B		C		D		E		F		G		H		J		K		L		M		N		P	
	Inch.	mm.	Inch.	mm.	Inch.	mm.	Inch.	mm.	Inch.	mm.	Inch.	mm.	Inch.	mm.	Inch.	mm.	Inch.	mm.	Inch.	mm.	Inch.	mm.	Inch.	mm.	Inch.	mm.	Inch.	mm.
SP8T-1	3,94	100	3,94	100	0,87	22,0	0,08	2,00	0,98	25,0	2,95	75,0	3,86	98,0	0,08	2,00	3,86	98,0	0,13	3,20	1,97	50,0	0,30	7,50	0,25	6,25	0,49	12,5
SP8T-2	7,87	200	3,94	100	0,95	24,0	0,08	2,00	1,97	50,0	5,91	150	7,80	198	0,08	2,00	3,86	98,0	0,13	3,20	3,94	100	0,37	9,50	0,49	12,5	0,98	25,0
SP8T-3	3,94	100	3,94	50,0	0,87	22,0	0,08	2,00	0,98	25,0	2,95	75,0	3,86	98,0	0,08	2,00	3,86	98,0	0,13	3,20	1,97	50,0	0,30	7,50	0,25	6,25	0,49	12,5



AMD-GROUP SARL

Made In France
RoHs Compliant

30/06/2010

LOW COST MECHANICAL SWITCHES (Public prices)

➤ **To order :**

SP4T R - 3G - 12V - T - S
1 2 3 4 5 6

<u>code</u>	<u>description</u>
1	Switch, number of ways
2	Type (Reflective or Absorptive)
3	Frequency range
4	Supply*
5	T=with TTL driver, O=without
6	Connectors**

* 5V, 12V, 24V

**S=SMA , B=BNC, T= TNC, N