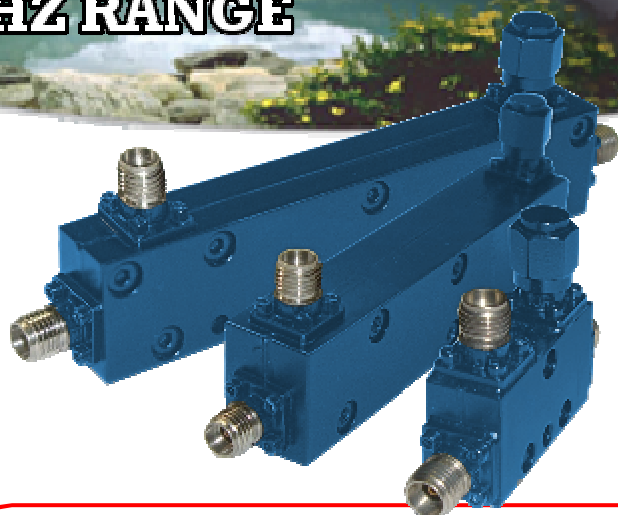


WIDEBAND DIRECTIONAL COUPLERS

40 GHz RANGE



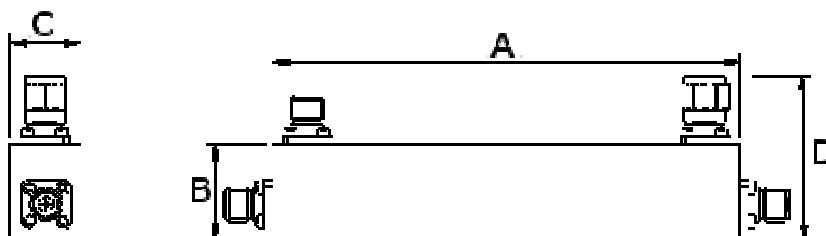
Features :

- Low loss
- High directivity
- Other coupling available
- Extended range to 44 GHz (On request)
- 20 Watt CW power
- 2.92mm or 2.4 mm M/F connectors

Technical Specifications *(intermediate frequencies performances on individual datasheets)*

Model	CD26.5-40-10-20 CD26.5-40-20-20	CD18-40-10-20 CD18-40-20-20	CD10-40-10-20 CD10-40-20-20	CD2-40-10-20	CD1-40-10-20
Frequency (GHz)	26.5—40	18—40	10—40	2—40	1 - 40
Coupling (dB) Referenced to output	10 ± 0.7 20 ± 1	10 ± 0.7 20 ± 1	10 ± 0.7 20 ± 1	10 ± 1	10 ± 1
IL (dB) Includes coupling power	1.7 1.3	1.7 1.3	1.7 1.3	1 @ 20 GHz 1.8 @ 40 GHz	1.2 @ 20 GHz 2 @ 40 GHz
Sensitivity (dB)	± 0.4 ± 0.4	± 0.4 ± 0.4	± 0.5 ± 0.5	± 0.8	± 1
VSWR main	1.7 1.7	1.7 1.7	1.7 1.7	1.5 @ 20 GHz 1.7 (Typ 1.5) @ 40 GHz	1.5 @ 20 GHz 1.7 (Typ 1.5) @ 40 GHz
VSWR coupled	1.7 1.7	1.7 1.7	1.7 1.7	1.5 @ 20 GHz 1.8 (Typ 1.5) @ 40 GHz	1.5 @ 20 GHz 1.8 (Typ 1.5) @ 40 GHz
Directivity (dB)	12 12	11 (Typ 12) 11 (Typ 12)	10 (Typ 12) 10 (Typ 12)	14 @ 20 GHz 11 @ 40 GHz	14 @ 20 GHz 10 @ 40 GHz
Outline	1	1	1	2	3

General Outline drawings



Type	A	B	C	D
1	29 (1.14)	16 (0.63)	10 (0.39)	31 (1.22)
2	59.5 (2.34)	17.9 (0.70)	13.5 (0.53)	33 (1.3)
3	89.4 (3.50)	17.9 (0.70)	13.5 (0.53)	33 (1.3)

Units : mm (in.)

Complete drawing including all dimensions and fixation points available on individual datasheet