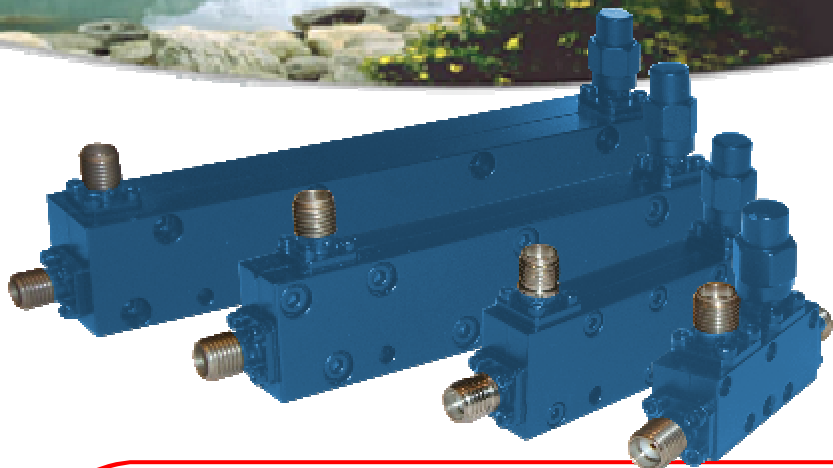


WIDEBAND DIRECTIONAL COUPLERS

27 GHz RANGE



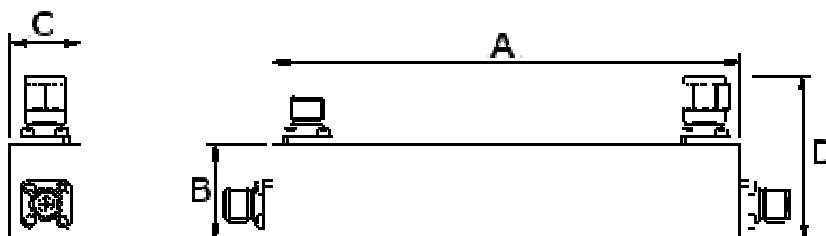
Features :

- Low loss
- High directivity
- Other coupling available
- 20 Watt CW power
- SMA M/F connectors
- Removable load
- Operating from -50°C to $+80^{\circ}\text{C}$

Technical Specifications *(intermediate frequencies performances on individual datasheets)*

Model	CD10-26.5-10-20 CD10-26.5-20-20	CD2-26.5-10-20 CD2-26.5-20-20	CD1-26.5-10-20 CD1-26.5-20-20	CD0.5-26.5-10-20 CD0.5-26.5-20-20
Frequency (GHz)	10—26.5	2—26.5	1—26.5	0.5—26.5
Coupling (dB) Referenced to output	10 ± 0.7 20 ± 1	10 ± 0.8 20 ± 1	10 ± 1 20 ± 1.2	10 ± 1.2 20 ± 1.2
IL (dB) Includes coupling power	1.2 0.8	1.4 1	1.6 1.2	1.9 1.7
Sensitivity (dB)	± 0.5 ± 0.5	± 0.6 ± 0.6	± 0.8 ± 0.8	± 2 ± 2
VSWR main	1.4 1.4	1.5 1.5	1.5 1.5	1.5 1.5
VSWR coupled	1.5 1.5	1.5 1.5	1.5 1.5	1.5 1.5
Directivity (dB)	12 12	12 12	12 12	12 10 (Typ 12)
Outline	1	2	3	4

General



Type	A	B	C	D
1	29 (1.14)	16 (0.63)	10 (0.39)	34 (1.34)
2	59.5 (2.34)	17.9 (0.70)	13.5 (0.53)	36 (1.42)
3	89.4 (3.50)	17.9 (0.70)	13.5 (0.53)	36 (1.42)
4	112 (4.40)	19.5 (0.76)	14.5 (0.57)	27.5 (1.48)

Units : mm (in.)

Complete drawing including all dimensions and fixation points available on individual datasheet